

# ARMORED GMC YUKON XL 4WD AT4

NEW GENERATION BODY STYLE



**LEVEL A9/B6+**

AGAINST 7.62 x 39mm, 5.56 x 45mm, 7.62 x 51mm



# VEHICLE SPECIFICATIONS

## GENERAL SPECIFICATIONS

**MAKE:** GMC

**MODEL:** Yukon XL AT4

**TRIM:** AT4 Package

**YEAR:** NEW

**ENGINE:** 6.2L ECOTEC3 V8 Gasoline

**POWER:** 420 hp

**TRANSMISSION:** 10-Speed Automatic

**COLOR:** Jet Black

**INTERIOR:** Black Leather AT4 Trim

**SEATING:** 2 + 2 + 3

**FINAL WEIGHT:** 8,850 lbs (4,014 kg.) Armored

**HEIGHT:**  
**76.5 in.**  
 (194 cm)

**WIDTH:**  
**81 in.**  
 (205 cm)

**LENGTH:**  
**227 in.**  
 (576 cm)

**WHEELBASE:**  
**134 in.**  
 (340 cm)



ALPINE ARMORING INC.





ALPINE ARMORING INC.



### Firewall

Minimal-piece Ballistic steel firewall provides protection up front.

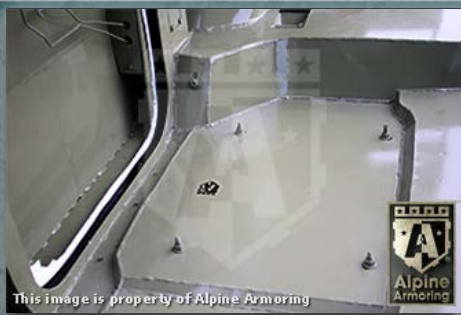
3-1



### Roof

Lined and seam welded with ballistic steel for protection against angled projectiles.

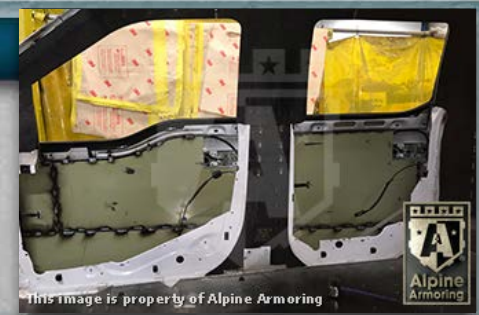
3-2



### Floor

Lined with ballistic steel to protect against explosive threats.

3-3



### Doors

Lined with ballistic steel to stop any side and vertical threats.

3-4



### Battery Protection

Fully enclosed in serviceable ballistic steel casings.

3-5



### Rear Partition Door

Customized ballistic rear swinging partition door with viewing window installed. Manual interior release access for rear hatch included.

3-6



### Overlaps

All doors, vertical panels, and windows feature ballistic steel overlaps to keep shrapnel from entering the cabin.

3-7



### Wheel Wells

Lined with ballistic steel to prevent against penetration.

3-8





ALPINE ARMORING INC.

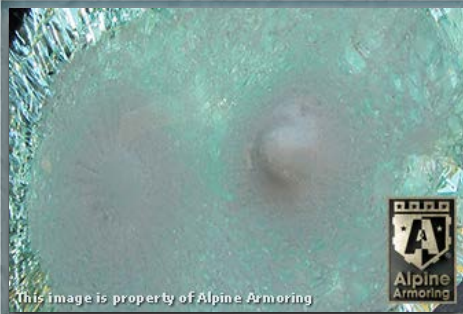
4  
"no one protects you better."



### Glass Armor

Minimum 40 mm thick glass/polycarbonate composite A9/B6+/NIJ III transparent armor installed on the vehicle.

4-1



### Anti-Spall Layer

Inner-most anti-spall layer prevents glass and bullet fragments from penetrating into passenger cabin area and is free of any optical distortion and discoloration.

4-2



### Multi-Hit Protection

All windows are capable of sustaining multiple hits while providing protection to passengers.

4-3

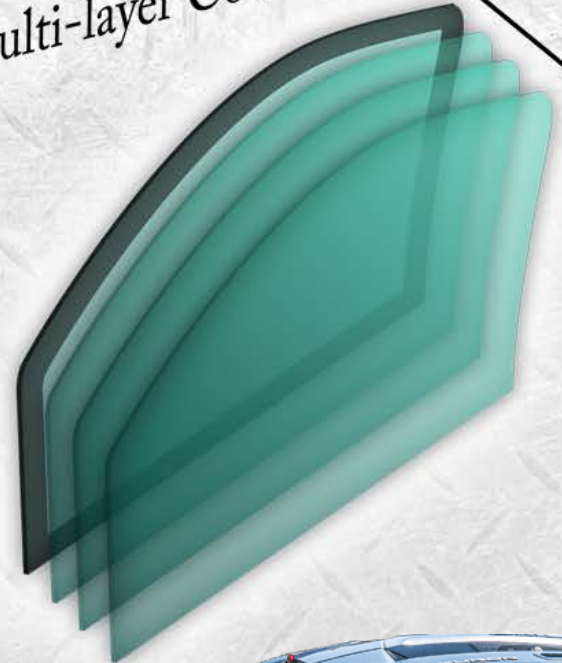


### Front Power Windows

Both front driver and passenger windows are power operable.

4-4

Multi-layer Construction





ALPINE ARMORING INC.

"no one protects you better."



### Rear Door Partition

Added center gunport and manual interior release access for rear hatch included.

5-1



### Power Windows

The front driver and passenger window are powered and lower approximately 4 - 6 inches.

5-2



### P.A./Multi-Siren System

Located on the center console. The multi-siren features standard siren tones, volume adjustment, and a public address system.

5-3



### Run-Flat Inserts

Vehicle will be equipped with full-size run-flat inserts in each tire.

5-4

### Battery Protection

The battery is encased in a ballistic steel box for protection.

5-5



### Fuel Tank Protection

Fuel tank is protected by a ballistic steel box. Protects from two simultaneous grenades and other blasts.

5-6



### Tailpipe Protection

The tailpipe features a special mesh that prevents the tailpipe from being sabotaged.

5-7



### Upgraded Hinges

Vehicle will be equipped with state-of-the-art Heavy-Duty (HD) hinges that have a built-in door stopper, preventing the use of retaining straps and door swing.

5-8





ALPINE ARMORING INC.

"no one protects you better."



**Upgraded Braking**

The vehicle's braking system (rotors & pads) will be upgraded to accommodate the added armor weight.

6-1

**WiFi/HotSpot/Sunroof Delete**

Following Items will be deleted upon completion:

- Sunroof/Moonroof

6-5



**Ballistic Door Overlap**

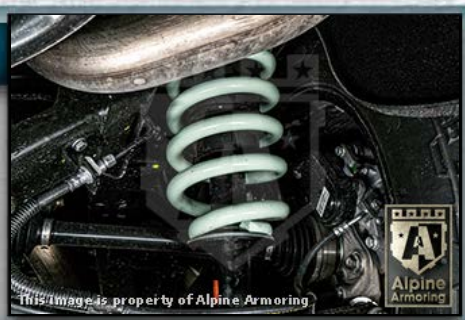
Each door is equipped with ballistic steel overlap with added custom bullet-catchers wrapped in high quality leather or vinyl.

6-2

**Upgrade Suspension**

The vehicle's suspension (HD Coils) will be upgraded to accommodate the added armor weight, along with chassis reinforcement as deemed necessary .

6-6



**OEM Appearance**

The exterior of the vehicle with the VIP Armoring conversion will maintain the OEM appearance of the factory vehicle.

6-3

**Rear Quarter Glass**

The rear quarter panel of the vehicle is reinforced with ballistic glass.

6-7



**P.A./Multi-Siren System**

Located on the center console. The multi-siren features standard siren tones, volume adjustment, and a public address system.

6-4

**Emergency Lights Package**

Alpine will install flashing Red/Blue LED lights hidden in the front grille and wired to the PA controller.

6-8



COMPLETED VEHICLE PHOTOS: EXTERIOR



ALPINE ARMORING INC.



7

"no one protects you better."



COMPLETED VEHICLE PHOTOS: EXTERIOR



ALPINE ARMORING INC.

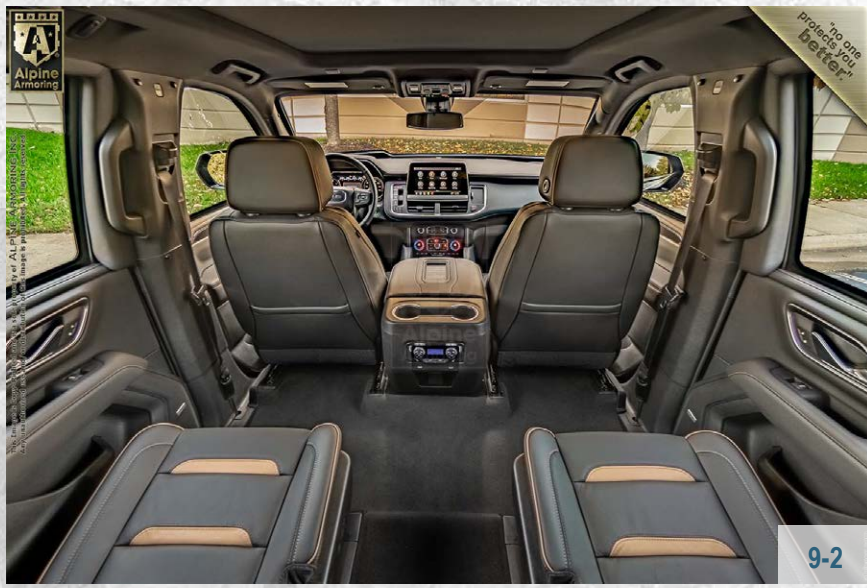




# COMPLETED VEHICLE PHOTOS: INTERIOR



ALPINE ARMORING INC.



# ALPINE ARMORING'S BALLISTIC CHART

WEAPONS	SPECS			LEVELS					BULLETS			NUMBER OF SHOTS	
	TYPE	CALIBER (mm)	CLASS	STANAG	UL	ALPINE	NIJ	CEN	MASS (g)	MATERIAL	VELOCITY		
	.38 Special	9 x 19	Handgun	—	1	A1	I,II,IIA	—	8.00	LCCJ	358 M/S	5	
	.357 Magnum	9 x 33	Handgun	—	2	A2	I,IIA	B1 & B3	10.20	JSP	430 M/S	5	
	.44 Magnum	11 x 33	Handgun	—	3	A3	IIIA	B4	15.60	LWC	440 M/S	5	
	MP5	9 x 19	SMG	—	6	A4	IIIA	B2	8.00	LCCJ	427 M/S	5	
	Shotgun	12 Gauge	Shotgun	—	3 & 4	A5	IIIA	SG2	28.30	SLUG	503 M/S	3	
	Tokarev	7.62 x 25	Handgun	—	—	A5	IIIA	—	5.50	LCSJ	488 M/S	5	
	Kalashnikov (AK-47)	7.62 x 39	Assault Rifle	—	—	A6	III	B5	9.70	SCCJ	732 M/S	5	
	Kalashnikov (AK-47 Military)	7.62 x 39 API BZ	Assault Rifle	II	—	A7	—	B5+	11.70	SCCJ	774 M/S	5	
	M16/AR-15	5.56 x 45 NATO SS109 5.56 x 45 NATO Ball	Assault Rifle	I	7	A8	IV	B5	4.00	SCCJ LCCJ	900 M/S 833 M/S	3	
	Winchester .308	7.62 x 51	Rifle	I	7	A9	III	B6	10.90	LCCJ	810 M/S	5	
	Remington 700 SPS	7.62 x 63 AP (.30-06) 7.62 x 51AP (WC core)	High-Power Rifle	III	5 & 8	A10	IV	B7-	10.80 8.40	AP	869 M/S 930 M/S	5	
	Dragunov	7.62 x 54R B32 API	Sniper Rifle	III	—	A11	IV+	B7+	10.04	SCCJ	854 M/S	1	
	.50 Cal	12.7 x 99	High-Power Rifle	IV	10	A12	—	—	45.00	CJ	908 M/S	1	

"no one protects you better"



**UL** ..... Underwriters Laboratory, 752  
**NIJ** ..... National Institute of Justice, 0108.01  
**CEN** ..... European Standard  
**STANAG** ... NATO's Standard (STANAG 4569)  
**ALPINE** .... Alpine Armoring's Certified Standard

**LCCJ** ..... Lead Core Copper Jacket  
**JSP** ..... Jacketed Soft Point  
**LWC** ..... Lead Wad Cutter  
**LCSJ** ..... Lead Core Steel Jacket  
**SCCJ** ..... Steel Core Copper Jacket  
**AP** ..... Armor Piercing  
**SG** ..... Shotgun

**Shots (5)** .... 11.4 cm Square Pattern (Corners & Center)  
**Shots (3)** .... 11.4 cm Triangular Pattern  
**Velocity** ..... Minimum Measured Velocity  
**NIJ Rating** .. Levels I, II, IIA, & IIIA (based on 1 of 2 required calibers of ballistic threat)



ALPINE ARMORING INC.





ALPINE ARMORING INC.



# WARRANTY

## ARMORED GMC YUKON XL AT4

This vehicle, as proposed to the client in this quote, would be under Alpine Armoring's premium warranty covering both the OEM and the entire conversion parts including all armored parts and labor as well as all added accessories for one full year, effective the day of sale. Additional warranty for longer period is available upon request.

Alpine Armoring Inc. hereby honors this warranty in the United States and around the world against any and all related manufacturer's defects, including parts & labor.

MANAGEMENT AUTHORIZED  
ALPINE ARMORING INC.  
CHANTILLY, VIRGINIA, USA

\_\_\_\_\_ DATE ISSUED

